

Snowfall Plan

Municipality of
Valtournenche



VALTOURNENCHE IS A WONDERFUL MUNICIPALITY SET AT THE FOOT OF THE MOUNT CERVIN, IN THE ALPINE REGION, WHERE SNOWFALLS ARE OFTEN ABUNDANT. IT IS THEREFORE IMPORTANT TO BECOME AWARE OF THE ENVIRONMENT THAT SURROUNDS YOU AND TO ACT RESPONSIBLY WHEN MAJOR SNOWFALLS OCCUR.

Some information on snowfalls



According to statistical evaluations, major snowfalls with a return time of 100 years may be expected, such as:

- the snowfall in Breuil-Cervinia (162 cm of snow);
- the snowfall in the town of Valtorunenche (130 cm of snow).

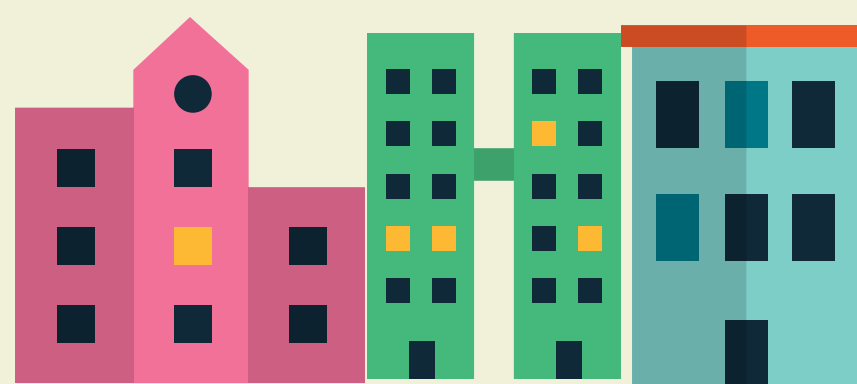
Risk associated to abundant snowfall events

- Congestion and/or interruption of traffic;
- Interruption of telephone or electrical lines due to heavy snow which may break cables;
- Excessive snow load on roofs;
- Falling snow and ice from roofs in residential centres;
- Falling trees and/or branches due to excessive snow weight, which may interrupt traffic.



What to do in case of heavy snow

TOWNS AND RESIDENTIAL AREAS



- 1) Make sure that you have a shovel available;
- 2) Make sure that you have a shovel available;
- 3) Don't shovel or push snow into the street and shovel it onto a corner to keep the road clean;
- 4) When it snows, park your car in garages, yards, or private areas to keep roads and public spaces free to help snow removal operations and for easy emergency access;

- 5) Clear snow and ice from your roof. If necessary, please consider hiring a professional;
- 6) Remove snow from private trees' branches which lean onto public roads and areas;
- 7) Wear warm clothing and put on sturdy footwear to avoid slips and trips;
- 8) Prepare for any interruption of power, heating and water supply. Make sure that food and any other essential items are available, including lifesaving medicines;
- 9) Avoid travel, if possible.

TRAVELLING



- 1) Check the windscreen wiper, battery, and anti-freezing liquid in the radiator in advance to avoid trouble in the event of bad weather;
- 2) Be sure to have winter tyres and/or snow chains compatible with your tyres as provided by the Highway Code;
- 3) Get snow chains fitted as soon as possible, do not wait for troublesome situations, especially if driving up-/downhill;
- 4) Make sure that you have a scraper in your car to remove ice from your windscreen;
- 5) It may be useful to have a shovel in your car;
- 6) Make sure your car has a full tank of fuel, in case you get stuck in a queue;
- 7) If your car has a diesel engine, make sure that you use an anti-freezing liquid;
- 8) Wear warm clothing and footwear suitable for snow;
- 9) Bring your lifesaving medicines with you;
- 10) If you get stuck, turn the engine off and wait for rescue;
- 11) Bring food and drinks with you, especially if you travel with children;
- 12) In troublesome situations, do not leave your car in conditions that may hinder normal road traffic and, above all, snowplough or rescue vehicles access;

A red rounded rectangular box with a white border. It is connected to the top by two white dotted lines that meet at a red dot. The text 'KEEP UPDATED!' is written in white, bold, uppercase letters inside the box.

KEEP UPDATED!

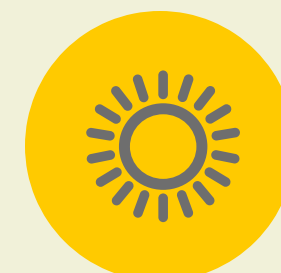
Subscribe to the service
SMS-informa go to the
Municipality of Valtournenche
[www.comune.valtournenche.
ao.it](http://www.comune.valtournenche.ao.it) (Tel +39 0166946811)



Keep updated and get informed
on weather conditions
by checking the regional weather report
and the snow and avalanche bulletin
available at

EMERGENCY NUMBER

112



www.regione.vda.it

Find other useful contacts below!

[Guide del Cervino](http://www.guidedelcervino.com) <http://www.guidedelcervino.com> (Tel. +39 0166 948169)

[Cervino S.p.a](http://www.cervinia.it) <http://www.cervinia.it> (Tel. +39 0166 94 43 11)

[Fondazione Montagna Sicura](http://www.fondazionemontagnasicura.org)

<http://www.fondazionemontagnasicura.org>

[Office du Tourisme Cervinia](http://www.office-du-tourisme-cervinia.ch) 0166/949136

[Office du Tourisme Valtournenche](http://www.office-du-tourisme-valtournenche.ch) 0166/92029



Interreg
ALCOTRA

Fondo europeo di sviluppo regionale



UNIONE EUROPEA

